

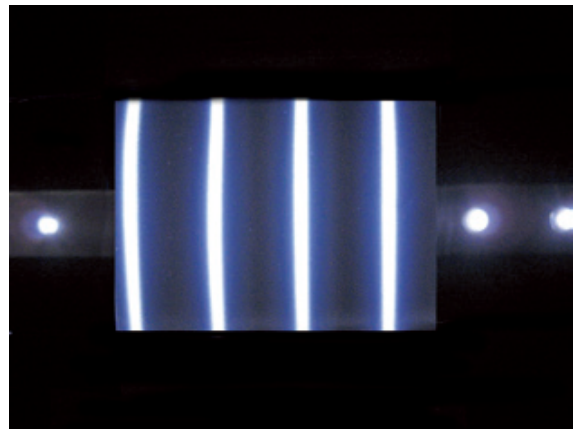
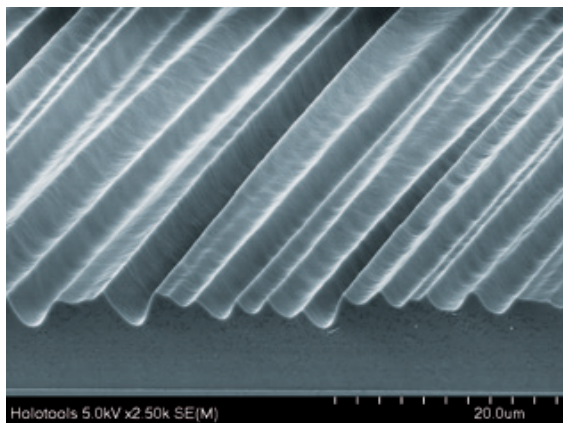
## HT-ED-80

### Linear Engineered Diffuser Molds

### 线性工程散射模具

#### Light management using Engineered Diffusers – ED

#### 利用工程散射的光管理-ED



Engineered diffusers control light output of lighting elements and light sources like lasers, LEDs, light fixtures and backlight units for LCDs. Engineered diffusers are surface diffusers with a very high transmission efficiency. holotools offers customer specified, tailor-made engineered diffusers with precise diffusion control and linear, elliptical and circular diffusion profiles. Engineered diffusers can be originated without seam-lines for large format applications. The HT-ED standard mold series was specifically designed as a set of multi-purpose engineered diffusers for R&D work, as well as for product and process development.

利用工程散射器来控制照明元件和光源的光输出，如激光器，LED、灯具和液晶显示器的背光单元。工程散射是具有很高传输效率的表面扩散。holotools 提供客户指定的定制工程扩散器，具有精确的扩散控制和线性、椭圆形和圆形扩散剖面。工程散射器可以在没有接缝线的情况下用于大面积应用。HT-ED 标准模具系列是专门为研发工作而设计的一套多用途工程扩散器，也可用于产品和工艺开发。

#### How HT-ED works 工作原理

Engineered diffusers are flat optical elements, carrying a micro/nanopattern on one surface. The surface pattern on the HT-EDs redirects incident light in a controlled and efficient way in order to achieve a homogenisation effect or a desired illumination pattern.

工程散射器是扁平的光学元件，在其中一个表面带有微/纳米图案。HT-ED 上的表面图案将入射光以一种可控和高效的方式重新定向，以实现均匀化效果或所需的发光图案。

### HT-ED applications 应用

- Beam shaping for laser sources
- Output control for LED lighting
- Optical films
- Light fixtures
- Multifunctional films in backlight units for flat panel display applications
  
- 激光源光束整形
- LED 照明的输出控制
- 光学薄膜
- 灯具
- 用于平板显示器中的背光单元的多功能薄膜

### Users of HT-ED molds 用户

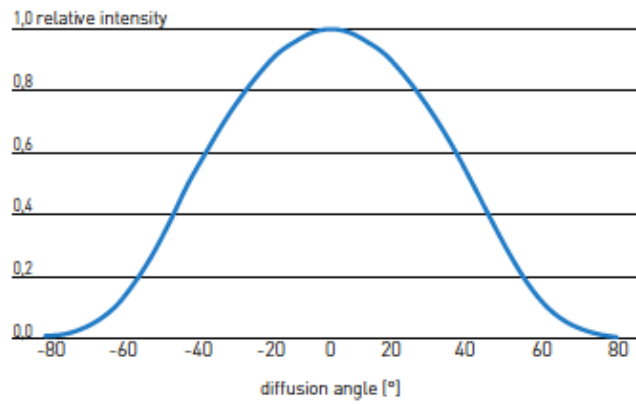
- Manufacturers of optical components
- Expert companies in injection molding and thermal embossing
- Film manufacturers – for product and process development work
- R&D institutes – for research activities on micro-optical structures
- Equipment manufacturers for injection molding, thermal embossing and Roll-to-Roll production equipment- as a reference to demonstrate the technical capabilities and homogeneity of their production processes
  
- 光学元件制造商
- 注塑和热压专业公司
- 薄膜制造商-用于产品和工艺开发工作
- 研发机构-用于微光学结构的研究活动
- 注塑、热压以及卷对卷生产的设备制造商 – 作为演示他们生产工艺的技术能力和重复性的参考

### Specifications

	HT-ED-L80B	HT-ED-L80D
Structure type	Engineered Diffuser	Engineered Diffuser
Output type	Linear diffusion	Linear diffusion
Diffusion angles (FWHM)*	1°/ 80°	1°/ 80°
Material	Nickel	Nickel
Mold thickness	300 µm	300 µm
Mold size	<b>70 mm x 70 mm</b>	<b>120 mm x 120 mm</b>
Active area	<b>50 mm x 50 mm</b>	<b>100 mm x 100 mm</b>

\* Embossed into a material with an optical index of refraction of 1.5

Diffusion profile



联系人：孙晓玉

Tel: +86-10-82867920/21/22-120 +86-13701029478

E-Mail: [xysun@germantech.com.cn](mailto:xysun@germantech.com.cn)

**GERMAN** **TECH**

北京汇德信科技有限公司

汇聚一流纳米技术!

公司产品：■ 薄膜制备与分析设备 ■ 微纳加工与制造设备

■ 表面形貌与测量设备 ■ 红外测温设备 ■ 实验样品及耗材

北京市海淀区学院路30号 科大天工大厦B座1408室 [www.germantech.com.cn](http://www.germantech.com.cn)